



**SPLIT TYPE
AIR CONDITIONER
CASSETTE type (50Hz)**

**SERVICE
MANUAL**

Models

Indoor unit

Outdoor unit

AUG25FUAR

AOG25FNAKT



CONTENTS

SPECIFICATIONS	1
OUTLINE AND DIMENSIONS	2
REFRIGERANT SYSTEM DIAGRAM	4
CIRCUIT DIAGRAM	5
INDOOR PCB CIRCUIT DIAGRAM	6
ERROR CONTENTS	7
DISASSEMBLY ILLUSTRATION	8
PARTS LIST	15

SPECIFICATIONS

TYPE	COOLING
INDOOR UNIT	AUG25FUAR
OUTDOOR UNIT	AOG25FNAKT
COOLING CAPACITY	7.05 kW

ELECTRICAL DATA

POWER SOURCE	3N ~ 400 V
FREQUENCY	50 Hz
RUNNING CURRENT	4.9 A
INPUT WATTS	2.40 kW
E.E.R.	2.94 kW/kW
STARTING CURRENT	27 A
MOISTURE REMOVAL	2.5 L/hr

COMPRESSOR

TYPE	Hermetic type, 2 pole, Single phase, Induction motor, Rotary
DISCRIMINATION	5JS290PCA01
REFRIGERANT R410A	1,550 g

FAN SPEED	INDOOR	HIGH	490 r.p.m.
		MED	430 r.p.m.
		LOW	360 r.p.m.
	OUTDOOR		780 r.p.m.
AIR FLOW	INDOOR		1,100 m ³ /hr
	OUTDOOR		3,200 m ³ /hr
DIMENSIONS H x W x D	INDOOR		246 x 830 x 830 mm
	GRILLE		35 x 940 x 940 mm
	OUTDOOR		650 x 830 x 320 mm
WEIGHT NET / GROSS	INDOOR		34 kg / 44 kg
	OUTDOOR		56 kg / 60 kg
REMOTE CONTROLLER TYPE			WIRED

ADDITIONAL REFRIGERANT CHARGE (R410A)

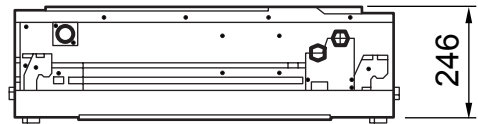
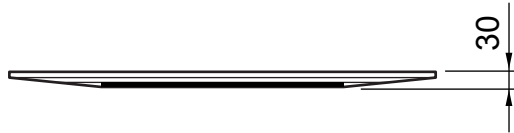
FULL CHARGE AMOUNT	PIPE LENGTH	7.5 m (24 ft.)	1,550 g (54.7 oz)
		10 m (33 ft.)	1,600 g (56.4 oz)
		15 m (49 ft.)	1,700 g (60.0 oz)
		20 m (66 ft.)	1,800 g (63.5 oz)
		25 m (82 ft.)	1,900 g (67.0 oz)
ADDITIONAL CHARGE			20 g / m (0.7 oz / ft.)
MAX PIPE LENGTH			25 m
MAX PIPE HEIGHT			15 m

OUTLINE AND DIMENSIONS

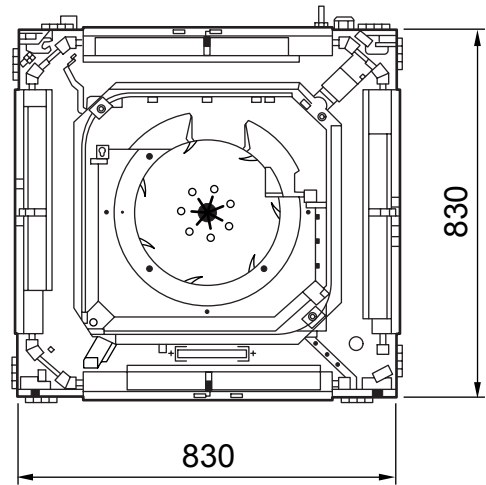
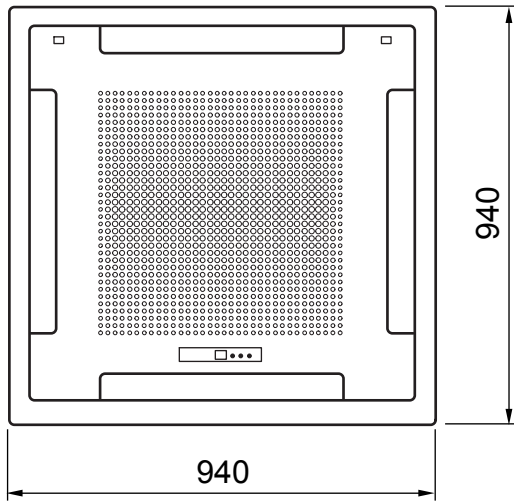
INDOOR UNIT

Model : AUG25FUAR

(unit : mm)

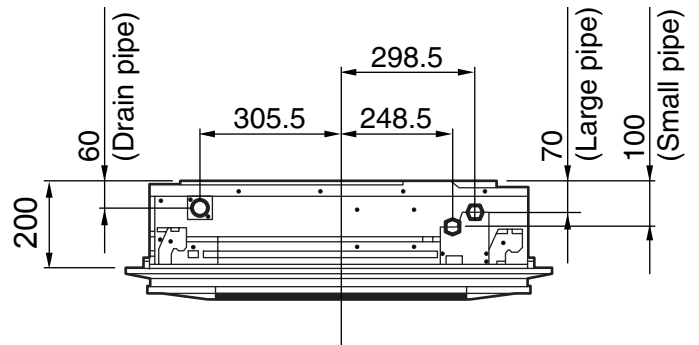
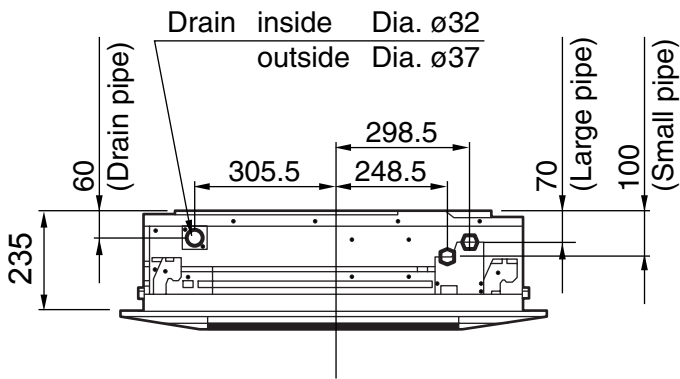


Side view



Bottom view (panel)

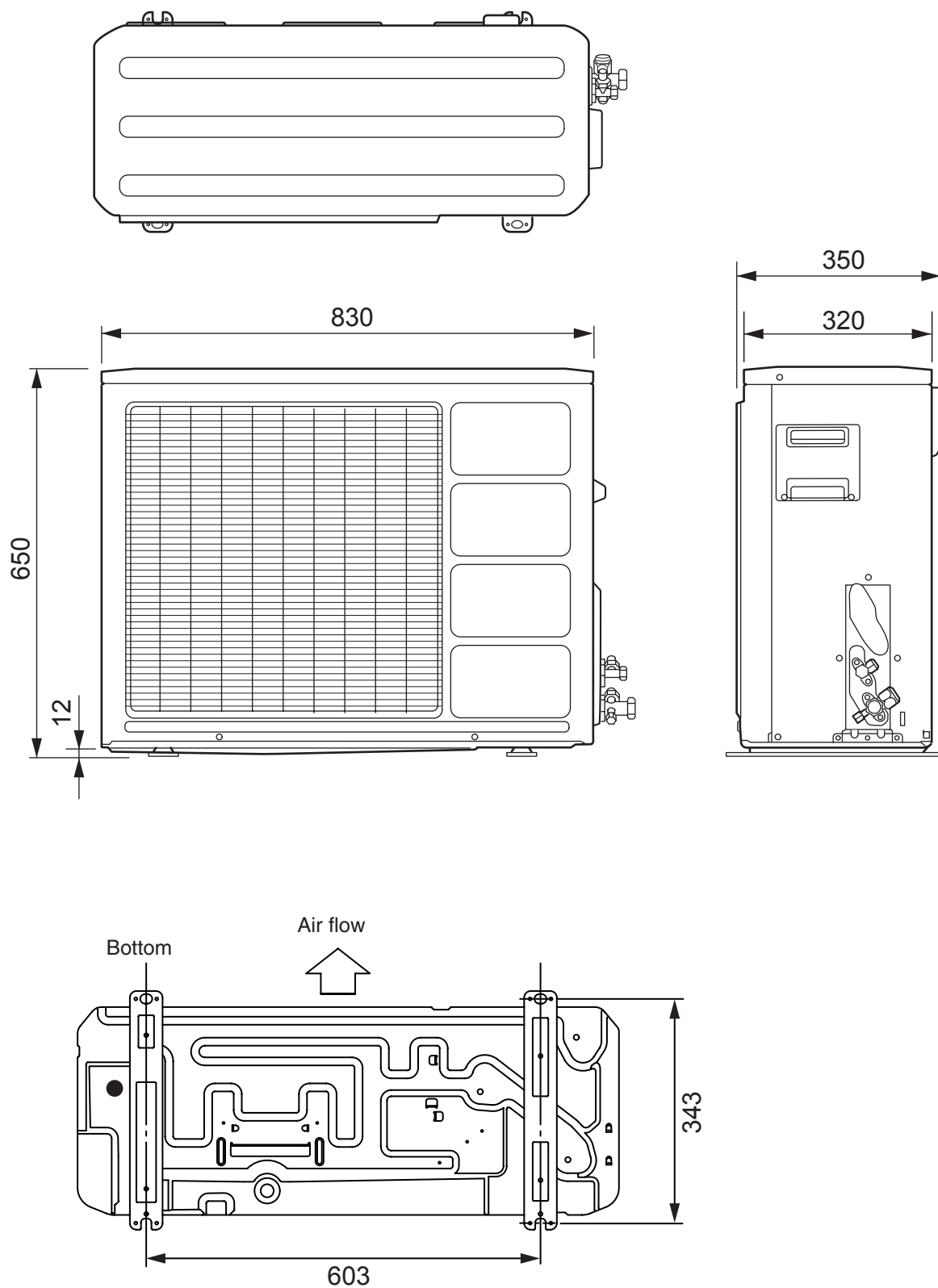
Bottom view



Side view (Standard setting)

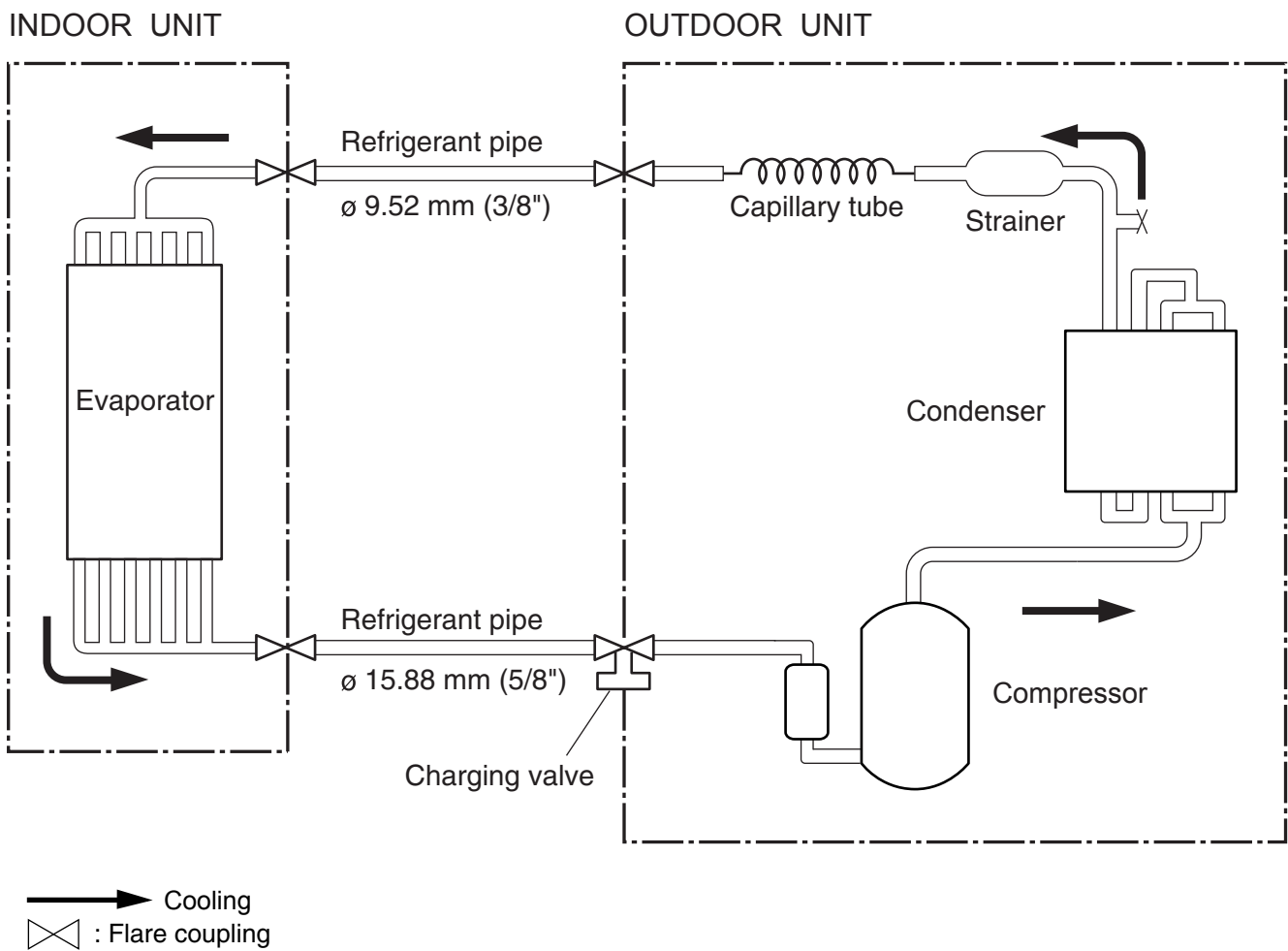
Side view (Slender setting)

OUTDOOR UNIT
Model : AOG25FNAKT
(unit : mm)



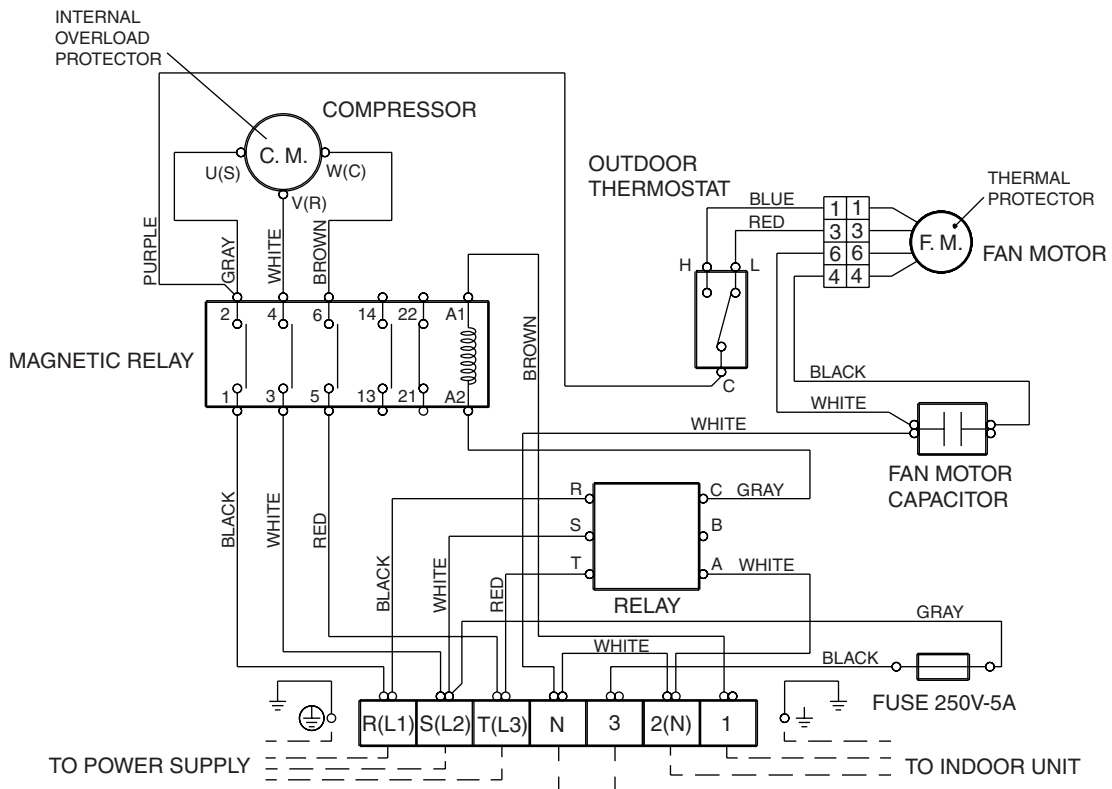
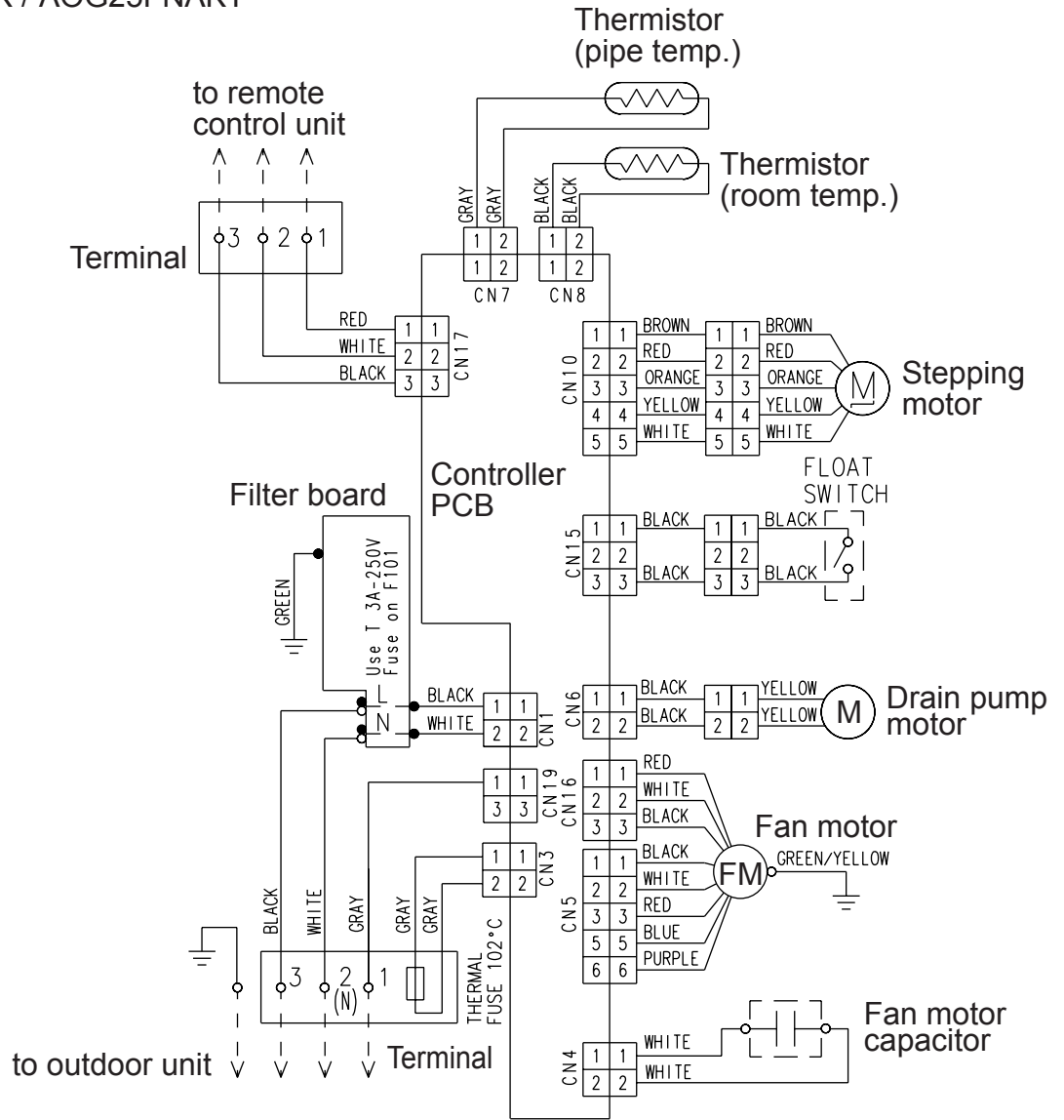
REFRIGERANT SYSTEM DIAGRAM

Models : AUG25FUAR / AOG25FNAKT



CIRCUIT DIAGRAM

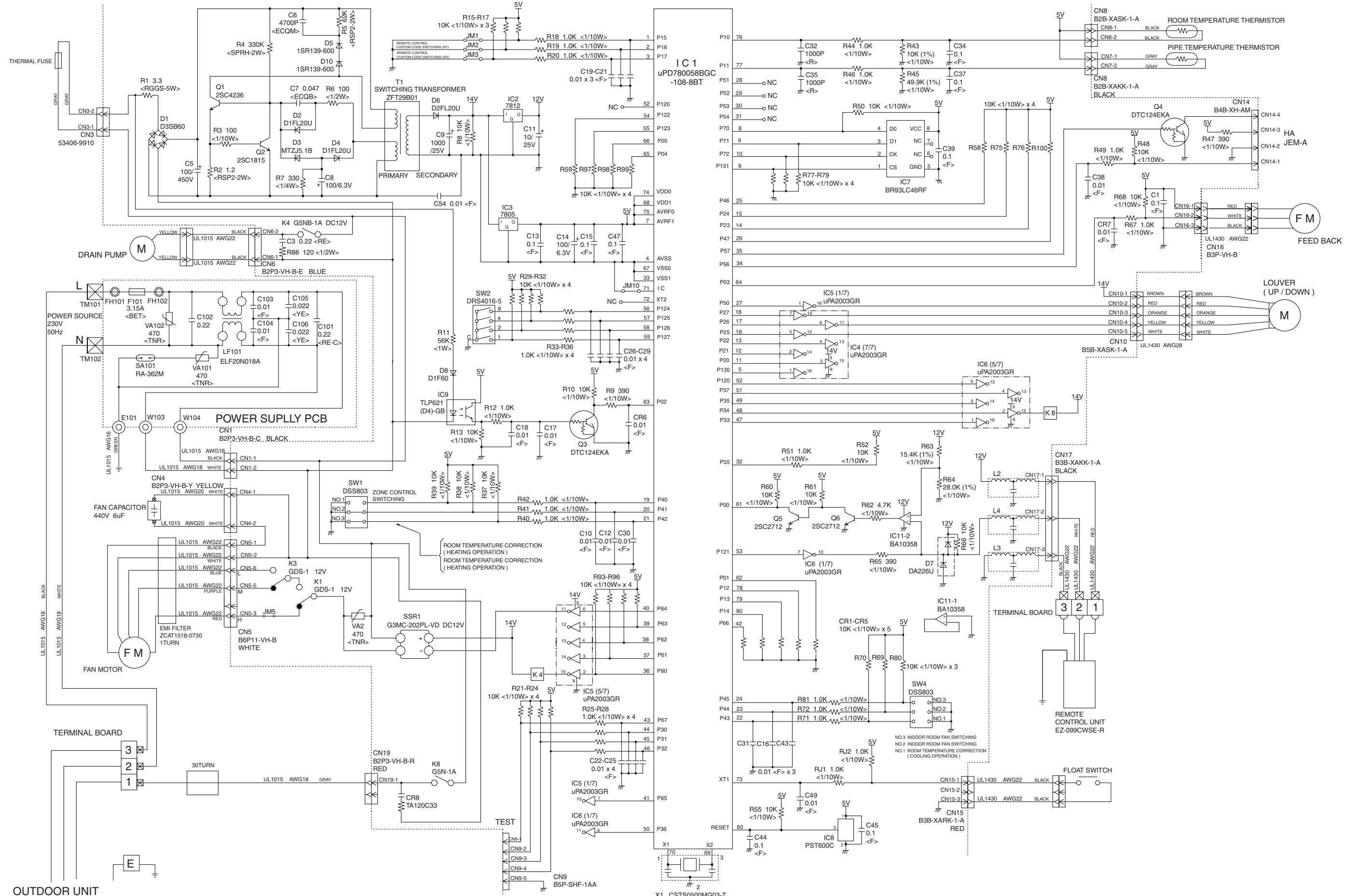
Models : AUG25FUAR / AOG25FNAKT



INDOOR PCB CIRCUIT DIAGRAM

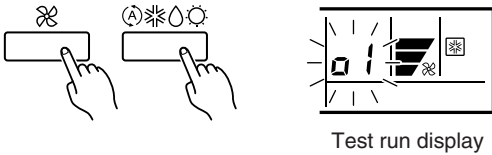
Model : AUG25FUAR

CONTROLLER PCB ASSEMBLY K01AL-0401WSE-C



ERROR CONTENTS

- (1) Stop the air conditioner operation.
- (2) Press the master control button and the fan control button simultaneously for 2 seconds or more to start the test run.



- (3) Press the start/stop button to stop the test run.

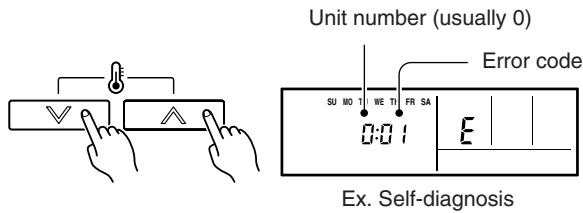
SELF-DIAGNOSIS

When the error indication E:EE is displayed, follow the following items to perform the self-diagnosis.

E:EE indicates an error has occurred.

REMOTE CONTROLLER DISPLAY

- (1) Stop the air conditioner operation.
- (2) Press the set temperature buttons \wedge / \vee simultaneously for 5 seconds or more to start the self-diagnosis. Refer to the following table for the description of each error code.

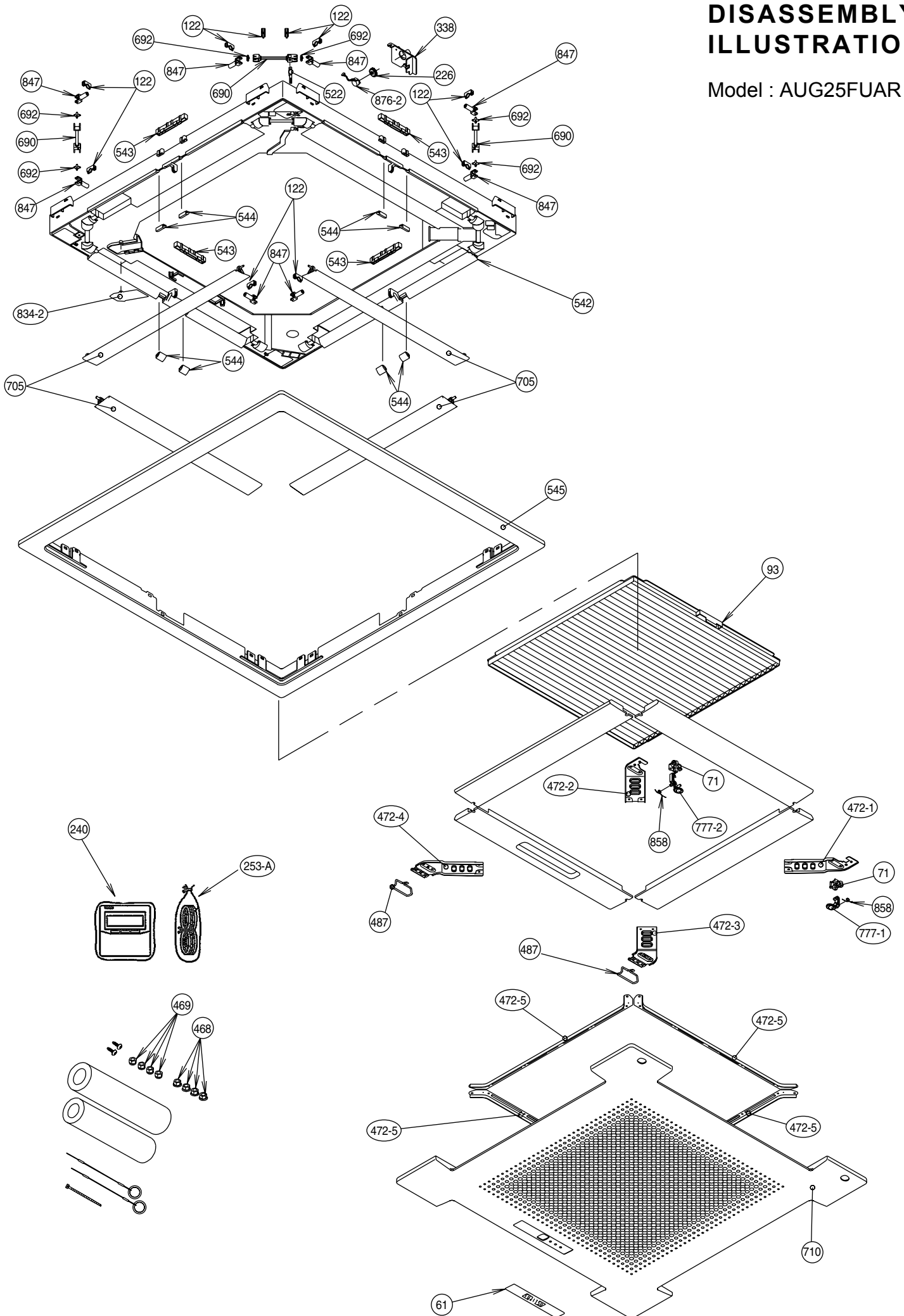


- (3) Press the set temperature buttons \wedge / \vee simultaneously for 5 seconds or more to stop the self-diagnosis.

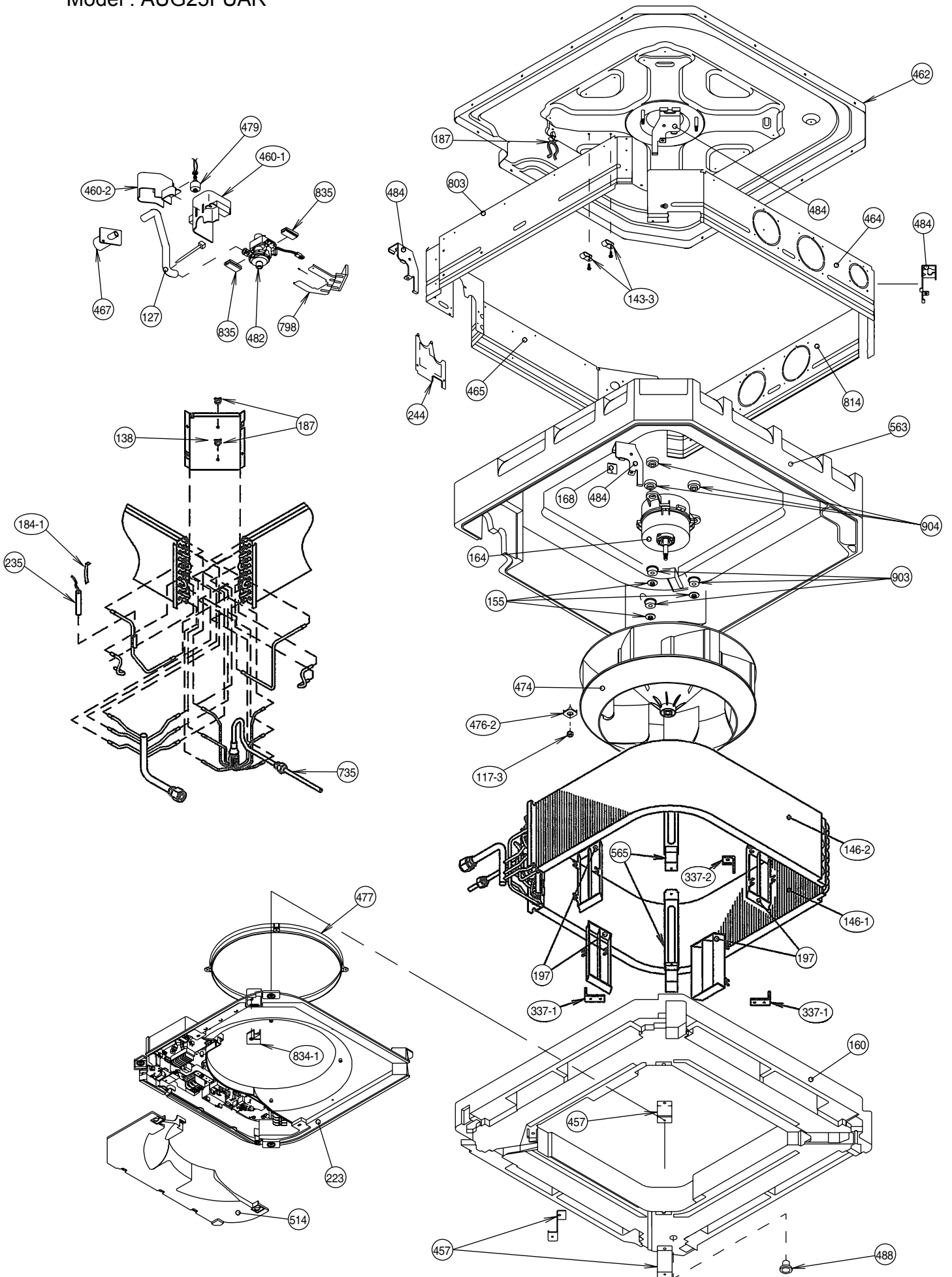
Error code	Error contents
00	Communication error (indoor unit ↔ remote controller)
01	Communication error (indoor unit ↔ outdoor unit)
02	Room temperature sensor open
03	Room temperature sensor short-circuited
04	Indoor heat exchanger temperature sensor open
05	Indoor heat exchanger temperature sensor short-circuited
06	Outdoor heat exchanger temperature sensor open
07	Outdoor heat exchanger temperature sensor short-circuited
08	Power source connection error
09	Float switch operated
0A	Outdoor temperature sensor open
0b	Outdoor temperature sensor short-circuited
0c	Discharge pipe temperature sensor open
0d	Discharge pipe temperature sensor short-circuited
0E	Outdoor high pressure abnormal
0F	Discharge pipe temperature abnormal
11	Model abnormal
12	Indoor fan abnormal
13	Outdoor signal abnormal
14	Outdoor EEPROM abnormal

DISASSEMBLY ILLUSTRATION

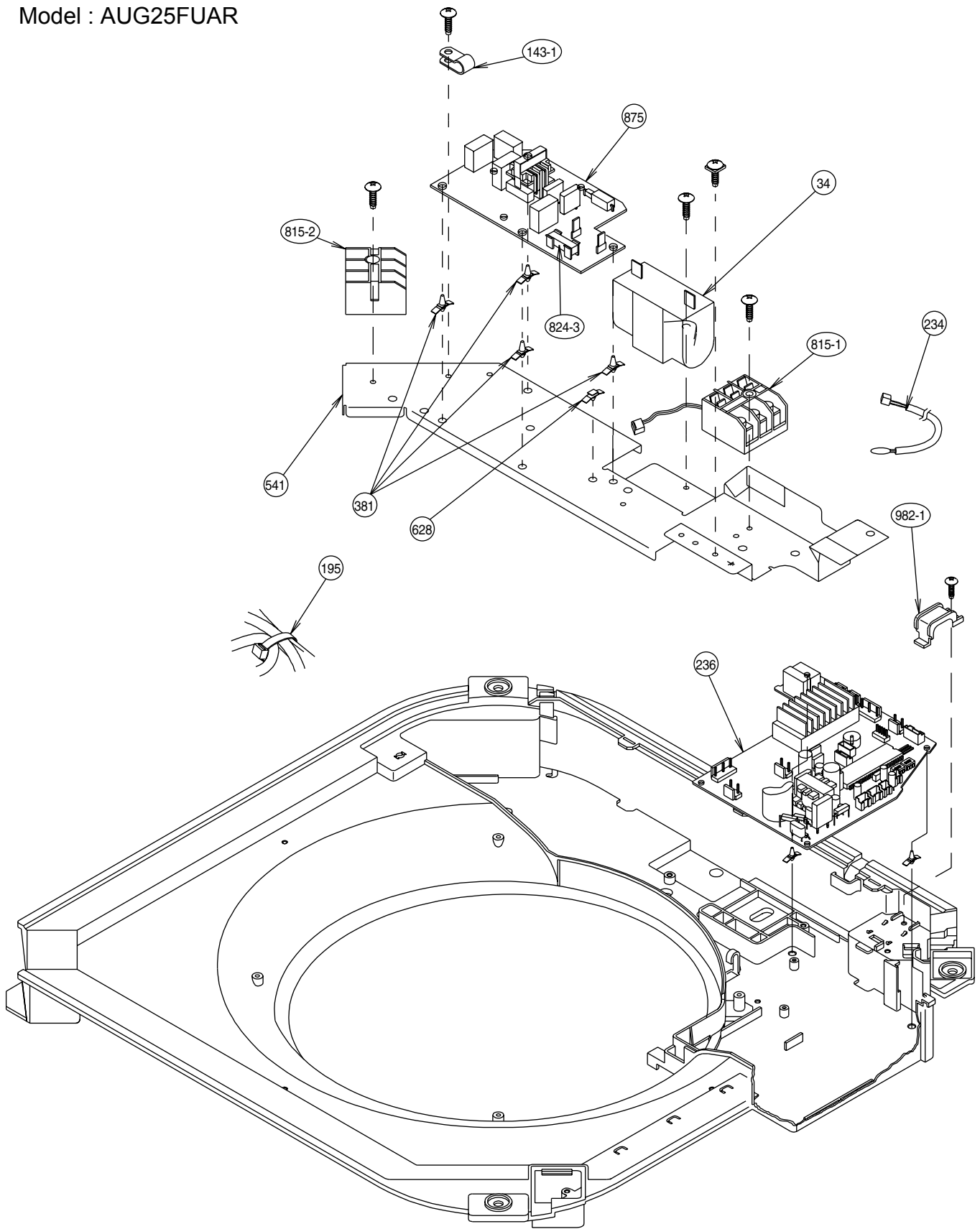
Model : AUG25FUAR



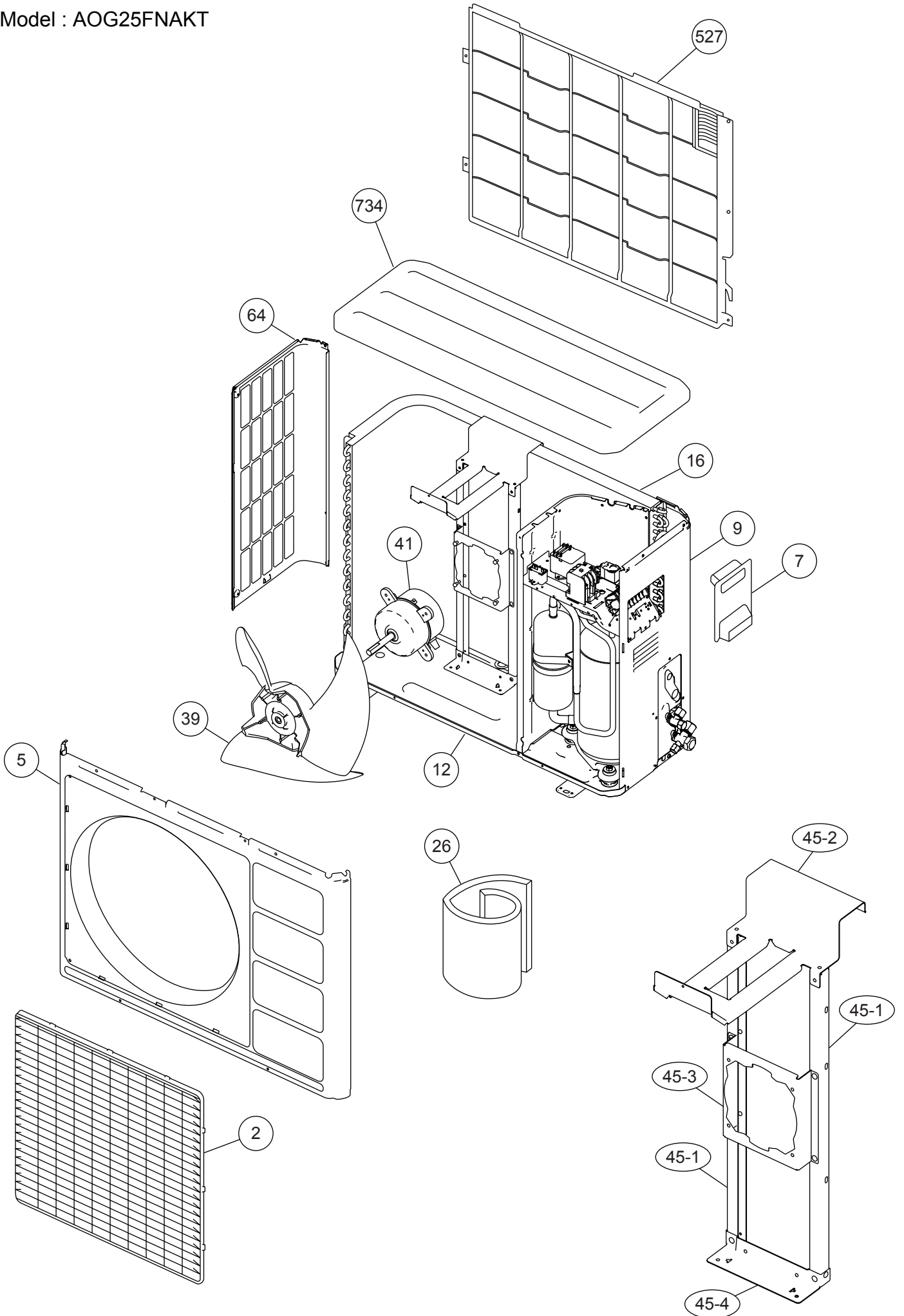
Model : AUG25FUAR



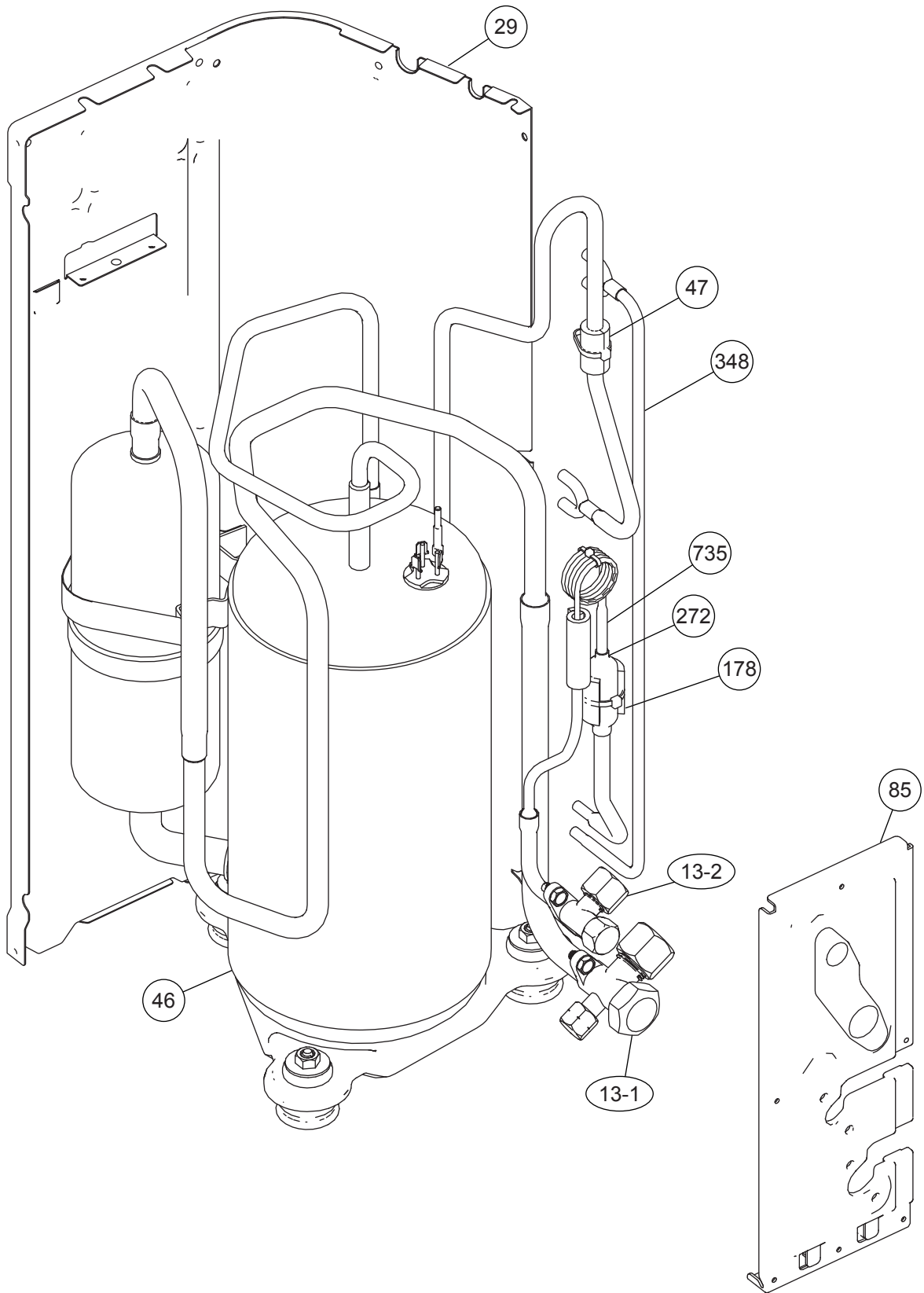
Model : AUG25FUAR



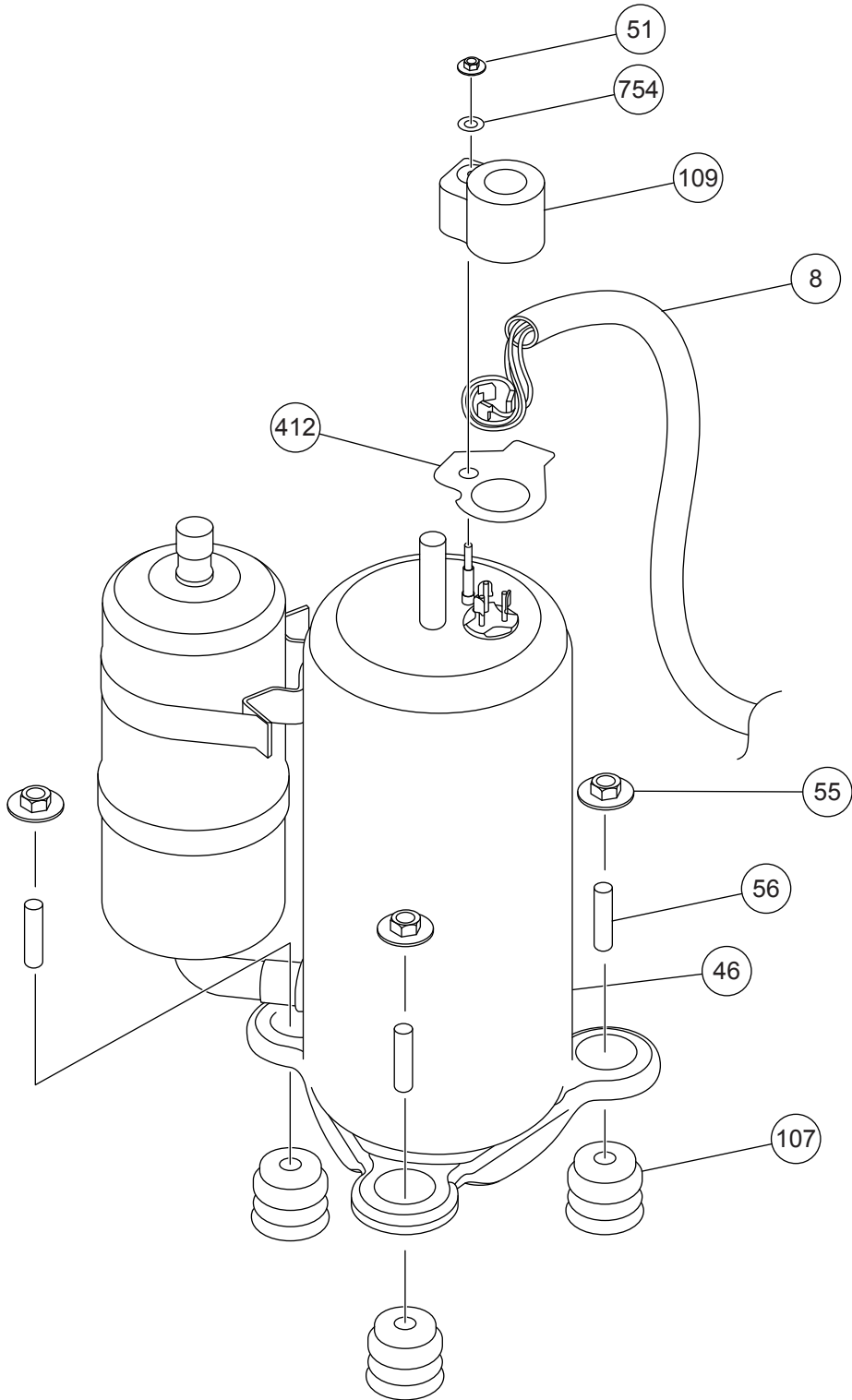
Model : AOG25FNAKT



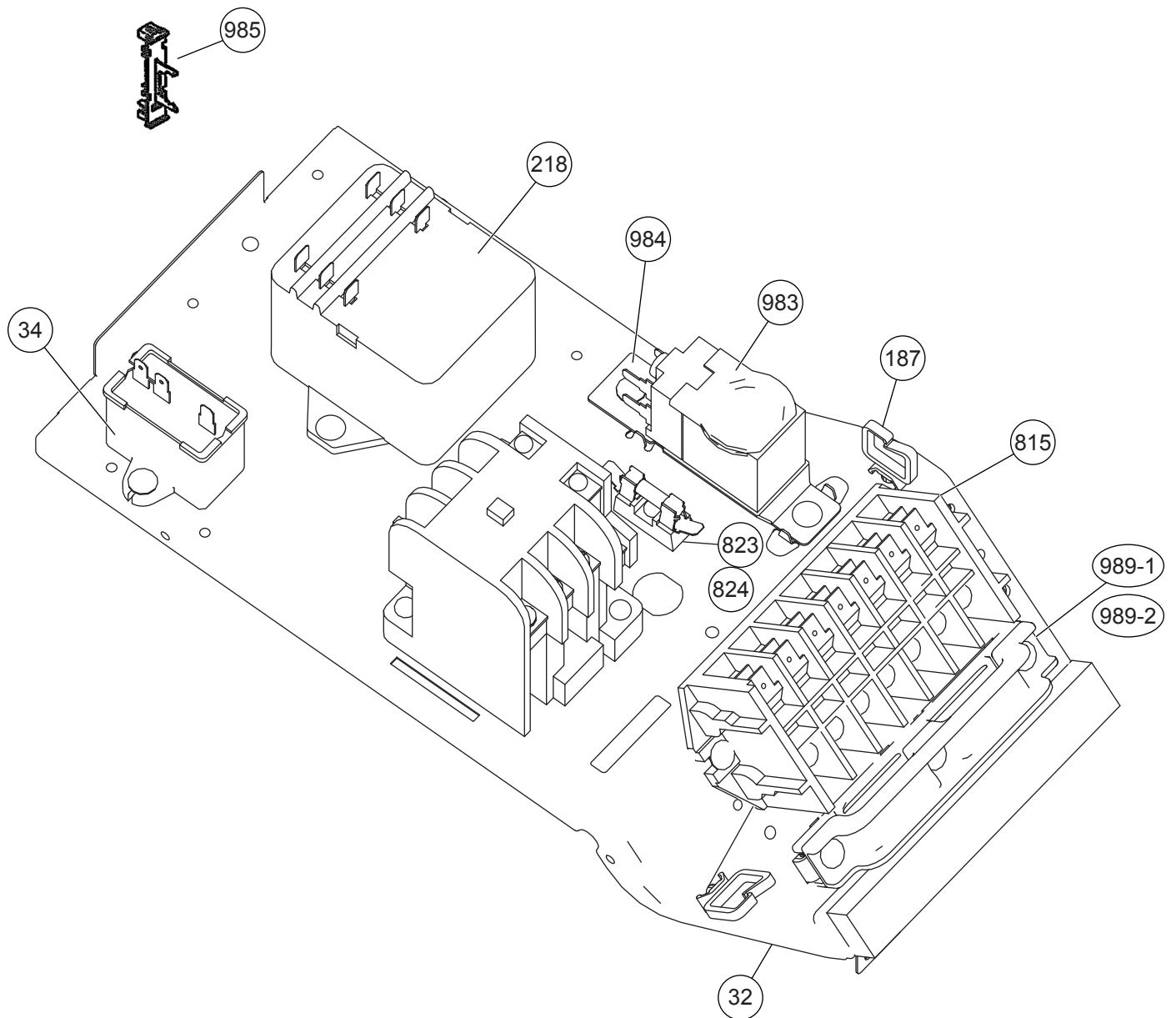
Model : AOG25FNAKT



Model : AOG25FNAKT



Model : AOG25FNAKT



PARTS LIST

INDOOR UNIT


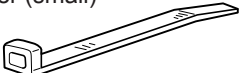



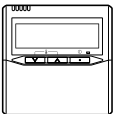
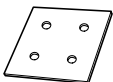

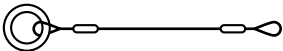
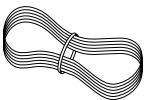
Ref. No.	Description	Part No.	Ord. Q'ty	Ref. No.	Description	Part No.	Ord. Q'ty
		AUG25FUAR				AUG25FUAR	
34	Capacitor (Fan Motor)	9900270216		476-2	Special Washer	9362756006	
61	Decoration Plate	9363131000		477	Bellmouth (B)	9362774000	
71	Grille Hook Holder	9362782005		479	Float Switch	9703285004	
93	Filter	9362766005		482	Pump Unit	9703125010	
117-3	Hex. Nut w/Spring Washer	9375072018		484	Hook	9362736008	
122	Louver Support Holder	9362799003		487	Grille Hinge Wire	9362754002	
127	Drain Hose	9365074008		488	Drain Pan Plug	313005174654	
138	Separate Wall	9362793001		514	Control Box Cover	9362763004	
143-1	Clamp NK-3N	313361274700		522	Joint Gear	9362772006	
143-3	Clamp NK-9N	313209399700		541	Terminal Plate	9363642001	
146-1	Evaporator-A Assy	9373799030		542	Panel Base	9362759014	
146-2	Evaporator-B Assy	9373800033		543	Panel Frame Holder	9362761017	
155	Special Nut M6	9307615016		544	Panel Base Holder	9362760010	
160	Drain Pan Assy	9362804004		545	Panel Frame	9362758017	
164	Fan Motor Assy-In	9601558019		563	Insulation (Inner Box)	9362797009	
168	Cabinet-E	9362735001		565	Evaporator Holder Assy	9362802024	
184-1	Thermostat Spring-A	313728262708		628	Locking Spacer-B	313005446558	
187	Clamp No.1219	313361271706		690	Joint-A	9362773003	
195	Clamp SKB-100	313361275805		692	Joint Shaft	9362771009	
197	Wind Guide Board	9373444015		705	Louver	9362769013	
223	Control Box	9362762007		710	Intake Grille	9362767019	
226	Motor Gear	9362764001		735	Distributor Assy	9371325040	
234	Thermistor Assy-Room	9703299025		777-1	Grille Hook-A	9362779012	
235	Thermistor Assy-Pipe	9703297014		777-2	Grille Hook-B	9362778015	
236	Controller PCB Assy K01AL-0401WSE-C1	9704557704		798	Pump Hook Bracket	9362753005	
240	Remote Control Unit	9372266069		803	Cabinet-D	9362792004	
244	Pipe Cover	9362748001		814	Cabinet-C	9362791007	
253-A	Wire Assy (Remote)	9372714010		815-1	Terminal-3P	9306489069	
337-1	Reinforcement (Eva.)-A	9362749008		815-2	Terminal-3P	9703345012	
337-2	Reinforcement (Eva.)-B	9362750004		824-3	Fuse	0600222512	
338	Motor Holder	9362765008		834-1	Wire Cover-A	9362789004	
381	Locking Spacer	313209391506		834-2	Wire Cover-B	9362788007	
457	Reinforcement (Drain Pan)	9362757003		835	Cushion Rubber (Pump)	9362777001	
460-1	Pump Cover-A	9362775007		847	Louver Supporter	9362770019	
460-2	Pump Cover-B	9362776004		858	Grille Spring	9362755009	
462	Top Cover Plate Assy	9362806022		875	Filter PCB Assy	9704561107	
464	Cabinet-A Assy	9362807012		876-2	Step Motor	9900362027	
465	Cabinet-B Assy	9362808019		903	Rubber (Vibration-proof) A	9364891002	
467	Drain Port	9362786003		904	Rubber (Vibration-proof) B	9364892009	
468	Special Nut-A (Large)	313005446653		982-1	Cord Clamp	9356857009	
469	Special Nut-B (Small)	313005446759					
472-1	Grille Reinforcement-A	9362738002					
472-2	Grille Reinforcement-B	9362739009					
472-3	Grille Reinforcement-C	9362740005					
472-4	Grille Reinforcement-D	9362741002					
472-5	Grille Reinforcement-E	9362742009					
474	Turbo Fan Assy	9362810012					

OUTDOOR UNIT

Ref. No.	Description	Part No.	Ord. Q'ty
		AOG25FNAKT	
2	Fan Guard	9371187013	
5	Front Panel	9371924014	
7	Connector Cover (Cabinet)	9366398004	
8	Wire Assy (Comp)	9372334041	
9	Side Panel R	9371927015	
12	Base Assy	9371920016	
13-1	3-Way Valve Assy	9372205013	
13-2	2-Way Valve Assy	9372204023	
16	Condenser Assy	9372181027	
26	Compressor Cover A	9372327012	
29	Separate Wall	9371933016	
32	Control Box	9371935010	
34	Capacitor, Plastic	9900270049	
39	Propeller Fan Assy	9366378013	
41	Motor Induct	9601671046	
45-1	Motor Bracket	9371929019	
45-2	Motor Bracket-Top	9371931012	
45-3	Motor Bracket Center	9371930015	
45-4	Motor Bracket Bottom	9371932019	
46	Compressor Assy	9372558119	
47	Rubber (Discharge Pipe)	313194159807	
51	Special Nut M5	9300301015	
55	Special Nut M8	9355091008	
56	Sleeve-A (Comp)	9375347017	
64	Side Panel L Ptd	9371926018	
85	Valve Plate Ptd	9371928012	
107	Rubber Seat-A	9351049010	
109	Terminal Cover (Comp)	9371511016	
178	Capillary Holder Rubber	313394274808	
187	Clip (Cable)	9352715006	
218	Relay	9900287016	
272	Strainer	9369287008	
348	Outlet Pipe (Cond)	9372190029	
412	Cover Gasket (Comp.)	9371512013	
527	Protective Net	9371934013	
734	Top Panel	9371925011	
735	Capillary Assy	9372197059	
754	Terminal Gask. Washer	9351053017	
815	Terminal-5P	9363276039	
823	Fuse Holder	0501456016	
824	Fuse	0600376086	
983	Outdoor Thermostat	9900275013	
984	Bracket (switch)	313986353607	
985	Bracket (thermostat)	9372643013	
989-1	Double Clamp-U	9374175017	
989-2	Double Clamp-L	9374176014	
---	Emblem-Rear	9372171011	
---	Bolt, Hex. Socket	0700145148	

STANDARD ACCESSORIES

INDOOR UNIT

Name and Shape	Part No.
	AUG25FUAR
Coupler heat insulation 	9350716029 } 1 each 9352766015 }
Binder (small) 	313361275805
Screw For installing the remote controller 	0700181108
Special nut A (large flange) 	313005446653
Special nut B (small flange) 	313005446759
Remote control unit 	9372266069
Template 	9363173000
Blower cover insulation 	9363265002
Hook wire 	9363168006
Remote controller cord 	9372714010

OPTIONS

Additional Grille Assy : UTG-AGEA-W (P/N 9002230002)

0601G3012